

ARG22658 anti-SLA Class II DR antibody [2E9/13]

Package: 100 µg

Store at: -20°C

Summary

Product Description	<p>Mouse Monoclonal antibody [2E9/13] recognizes SLA Class II DR</p> <p>This antibody recognizes SLA DR molecules which are expressed on all B cells, antigen presenting cells and on certain subsets of resting and activated T cells.</p> <p>Mouse anti Pig SLA Class II DR antibody, clone 289/13 reacts with lymphocytes from all outbred and miniature pigs so far tested, suggesting that it recognizes a monomorphic determinant of Porcine SLA DR.</p> <p>The major histocompatibility complex (MHC) is a cluster of genes that are important in the immune response to infections. In pigs, this is referred to as the swine leukocyte antigen (SLA) region. There are 3 major MHC class II proteins encoded by the SLA which are SLA DP, SLA DQ and SLA DR.</p> <p>Mouse anti Pig SLA class II Dr, clone 2E9/13 immunoprecipitates a heterodimer composed of two polypeptides of 28 and 35kD from NP-40 extracts of biotin surface-labelled Porcine peripheral blood mononuclear cells.</p> <p>Clone 2E9/13 is reported to inhibit the mixed lymphocyte reaction and T cell stimulation induced by African swine fever virus and staphylococcal enterotoxin B (Bullido et al. 1997).</p>
Tested Reactivity	Bov, Pig
Tested Application	FACS, IHC-Fr, IP
Host	Mouse
Clonality	Monoclonal
Clone	2E9/13
Isotype	IgG2b
Target Name	SLA Class II DR
Species	Pig
Immunogen	Porcine monocytes.
Conjugation	Un-conjugated
Alternate Names	SLA-DRA1; SLA-DRA2; SLA-DR-alpha

Application Instructions

Application table	Application	Dilution
	FACS	1:25 - 1:200
	IHC-Fr	Assay-dependent
	IP	Assay-dependent
Application Note	<p>FACS: Use 10 µl of the suggested working dilution to 10⁶ cells in 100 µl.</p> <p>* The dilutions indicate recommended starting dilutions and the optimal dilutions or concentrations should be determined by the scientist.</p>	

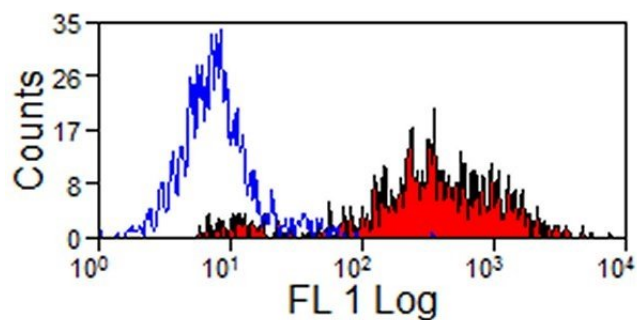
Properties

Form	Liquid
Purification	Purification with Protein A.
Buffer	PBS and 0.09% Sodium azide.
Preservative	0.09% Sodium azide
Concentration	1 mg/ml
Storage instruction	For continuous use, store undiluted antibody at 2-8°C for up to a week. For long-term storage, aliquot and store at -20°C or below. Storage in frost free freezers is not recommended. Avoid repeated freeze/thaw cycles. Suggest spin the vial prior to opening. The antibody solution should be gently mixed before use.
Note	For laboratory research only, not for drug, diagnostic or other use.

Bioinformation

Gene Symbol	SLA-DRA
Gene Full Name	MHC class II DR-alpha

Images



ARG22658 anti-SLA Class II DR antibody [2E9/13] FACS image

Flow Cytometry: Pig peripheral blood lymphocytes stained with ARG22658 anti-SLA Class II DR antibody [2E9/13] followed by Goat anti-Mouse IgG (FITC).