

ARG22651 anti-CD21 antibody [CA2.1D6]

Package: 50 µg
Store at: -20°C

Summary

| | |
|---------------------|---|
| Product Description | <p>Mouse Monoclonal antibody [CA2.1D6] recognizes CD21 This antibody recognizes Canine CD21, also known as Complement receptor type 2. CD21 is a cell surface antigen expressed by Canine B lymphocytes. The antigen recognised may be the Canine homologue of Human CD21, but this has not been fully confirmed. Mouse anti Canine CD21 antibody , clone CA2.1D6 also recognizes the CD21 antigen in Felids. Expression in cats is analogous to that seen in dogs with strong expression on lymphocytes, in a manner mutually exclusive with expression of CD4 or CD8. Clone CA2.1D6 also immunoprecipitates a 145kDa protein from feline lymphocytes, similar to the protein immunoprecipitated by the antibody from Canine lymphocytes (Dean et al. 1996).</p> |
| Tested Reactivity | Cat, Dog, Hrs |
| Tested Application | FACS, IHC-Fr, IP |
| Host | Mouse |
| Clonality | Monoclonal |
| Clone | CA2.1D6 |
| Isotype | IgG1 |
| Target Name | CD21 |
| Species | Dog |
| Conjugation | Un-conjugated |
| Alternate Names | Cr2; Complement C3d receptor; C3DR; CD21; CD antigen CD21; Complement receptor type 2; SLEB9; CR; CVID7; Epstein-Barr virus receptor; EBV receptor |

Application Instructions

| Application table | Application | Dilution |
|-------------------|-------------|-----------------|
| | FACS | 1:100 |
| | IHC-Fr | Assay-dependent |
| | IP | Assay-dependent |

Application Note

FACS: Use 10 µl of the suggested working dilution to label 10⁶ cells or 100 µl whole blood.
* The dilutions indicate recommended starting dilutions and the optimal dilutions or concentrations should be determined by the scientist.

Properties

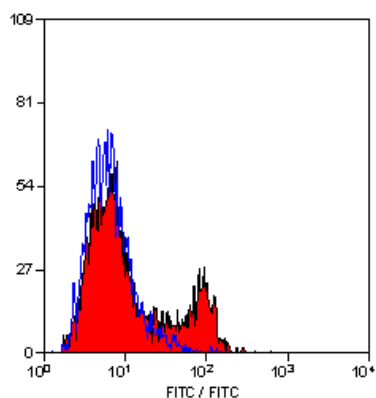
| | |
|--------------|------------------------------|
| Form | Liquid |
| Purification | Purification with Protein A. |
| Buffer | PBS and 0.09% Sodium azide. |

| | |
|---------------------|--|
| Preservative | 0.09% Sodium azide |
| Concentration | 1 mg/ml |
| Storage instruction | For continuous use, store undiluted antibody at 2-8°C for up to a week. For long-term storage, aliquot and store at -20°C or below. Storage in frost free freezers is not recommended. Avoid repeated freeze/thaw cycles. Suggest spin the vial prior to opening. The antibody solution should be gently mixed before use. |
| Note | For laboratory research only, not for drug, diagnostic or other use. |

Bioinformation

| | |
|----------------|--|
| Gene Symbol | CR2 |
| Gene Full Name | complement component (3d/Epstein Barr virus) receptor 2 |
| Background | This gene encodes a membrane protein, which functions as a receptor for Epstein-Barr virus (EBV) binding on B and T lymphocytes. Genetic variations in this gene are associated with susceptibility to systemic lupus erythematosus type 9 (SLEB9). Alternatively spliced transcript variants encoding different isoforms have been found for this gene.[provided by RefSeq, Sep 2009] |
| Function | Receptor for complement C3Dd, for the Epstein-Barr virus on human B-cells and T-cells and for HNRPU. Participates in B lymphocytes activation. [UniProt] |
| Calculated Mw | 113 kDa |

Images



ARG22651 anti-CD21 antibody [CA2.1D6] FACS image

Flow Cytometry: Canine peripheral blood lymphocytes stained with ARG22651 anti-CD21 antibody [CA2.1D6].