

ARG22584 anti-CD4 antibody [W3/25] (PE)

Package: 50 tests

Store at: 4°C

Summary

Product Description	PE-conjugated Mouse Monoclonal antibody [W3/25] recognizes CD4 This antibody recognizes the rat CD4 cell surface glycoprotein, a 55kD molecule expressed by helper T cells and weakly by monocytes. This antibody inhibits proliferation and IL-2 production in the MLR reaction. Mouse anti Rat CD4 antibody, clone W3/25 has been described reacting with paraffin-embedded material following PLP fixation (periodate-lysine-paraformaldehyde) (Whiteland et al. 1995). Mouse anti Rat CD4 antibody, clone W3/25 is routinely tested in flow cytometry on rat splenocytes
Tested Reactivity	Rat
Tested Application	FACS
Host	Mouse
Clonality	Monoclonal
Clone	W3/25
Isotype	IgG1
Target Name	CD4
Species	Rat
Immunogen	Rat Thymocyte Membrane Glycoproteins.
Conjugation	PE
Alternate Names	CD4mut; CD antigen CD4; T-cell surface glycoprotein CD4; T-cell surface antigen T4/Leu-3

Application Instructions

Application table	Application	Dilution
	FACS	1:100 - 1:200

Application Note FACS: Use 10ul of the suggested working dilution to label 10^6 cells in 100ul.
* The dilutions indicate recommended starting dilutions and the optimal dilutions or concentrations should be determined by the scientist.

Properties

Form	Liquid
Purification	Purification with Protein A/G.
Buffer	PBS, 0.09% Sodium azide, 1% BSA and 5% Sucrose.
Preservative	0.09% Sodium azide
Stabilizer	1% BSA and 5% Sucrose
Storage instruction	Aliquot and store in the dark at 2-8°C. Keep protected from prolonged exposure to light. Avoid repeated freeze/thaw cycles. Suggest spin the vial prior to opening. The antibody solution should be gently mixed before use.

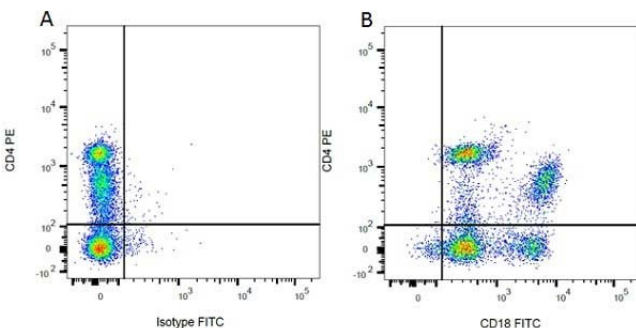
Note

For laboratory research only, not for drug, diagnostic or other use.

Bioinformation

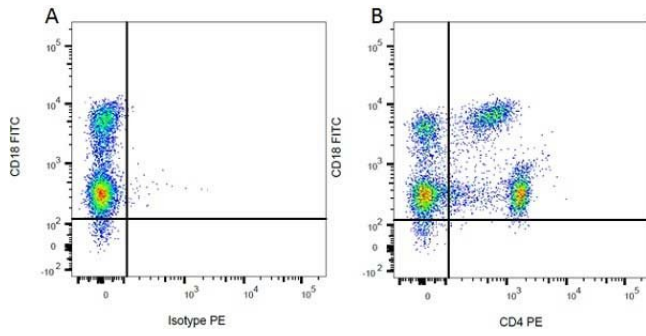
Gene Symbol	Cd4
Gene Full Name	Cd4 molecule
Background	CD4 is a membrane glycoprotein of T lymphocytes that interacts with major histocompatibility complex class II antigens and is also a receptor for the human immunodeficiency virus. This gene is expressed not only in T lymphocytes, but also in B cells, macrophages, and granulocytes. It is also expressed in specific regions of the brain. The protein functions to initiate or augment the early phase of T-cell activation, and may function as an important mediator of indirect neuronal damage in infectious and immune-mediated diseases of the central nervous system. Multiple alternatively spliced transcript variants encoding different isoforms have been identified in this gene. [provided by RefSeq, Aug 2010]
Function	CD4 is an integral membrane glycoprotein that plays an essential role in the immune response and serves multiple functions in responses against both external and internal offenses. In T-cells, functions primarily as a coreceptor for MHC class II molecule:peptide complex. The antigens presented by class II peptides are derived from extracellular proteins while class I peptides are derived from cytosolic proteins. Interacts simultaneously with the T-cell receptor (TCR) and the MHC class II presented by antigen presenting cells (APCs). In turn, recruits the Src kinase LCK to the vicinity of the TCR-CD3 complex. LCK then initiates different intracellular signaling pathways by phosphorylating various substrates ultimately leading to lymphokine production, motility, adhesion and activation of T-helper cells. In other cells such as macrophages or NK cells, plays a role in differentiation/activation, cytokine expression and cell migration in a TCR/LCK-independent pathway. Participates in the development of T-helper cells in the thymus and triggers the differentiation of monocytes into functional mature macrophages. [UniProt]
Highlight	Related products: CD4 antibodies ; CD4 ELISA Kits ; CD4 Duos / Panels ; Anti-Mouse IgG secondary antibodies ; Related news: New antibody panels and duos for Tumor immune microenvironment Tumor-Infiltrating Lymphocytes (TILs)
Research Area	Developmental Biology antibody; Immune System antibody; Regulatory T cells Study antibody; T-cell infiltration Study antibody; Tumor-infiltrating Lymphocyte Study antibody
Calculated Mw	51 kDa
PTM	Palmitoylation and association with LCK contribute to the enrichment of CD4 in lipid rafts.

Images



ARG22584 anti-CD4 antibody [W3/25] (PE) FACS image

Flow Cytometry: Figure A. ARG22584 anti-CD4 antibody [W3/25] (PE) and FITC conjugated Mouse IgG1 isotype control. Figure B. ARG22584 anti-CD4 antibody [W3/25] (PE) and FITC conjugated Mouse anti Rat CD18. All experiments performed on red cell lysed Rat blood gated on mononuclear cells.



ARG22584 anti-CD4 antibody [W3/25] (PE) FACS image

Flow Cytometry: Figure A. FITC conjugated Mouse anti Rat CD18 and PE-conjugated Mouse IgG1 isotype control. Figure B. FITC conjugated Mouse anti Rat CD18 and ARG22584 anti-CD4 antibody [W3/25] (PE). All experiments performed on red cell lysed Rat blood gated on mononuclear cells.