

## ARG22498 anti-CD66a + CD66c + CD66d antibody [YTH71.3]

Package: 50 µg  
Store at: -20°C

### Summary

Product Description	Rat Monoclonal antibody [YTH71.3] recognizes CD66a + CD66c + CD66d This antibody recognizes 3 members of the human CD66 family, namely CD66a, CD66c and CD66d. CD66 members are expressed by human neutrophils and cells of the colon where it is down regulated in some cases of colon carcinoma (Neumaier et al. 2012). CD66a is also expressed in the human alveolar adenocarcinoma cell line A549 and may play a role in Moraxella catarrhalis induced apoptosis of pulmonary epithelial cells in diseases including COPD and emphysema (N'Guessan et al. 2007).
Tested Reactivity	Hu, R. Mk
Species Does Not React With	Ms
Tested Application	FACS, IHC-Fr
Host	Rat
Clonality	Monoclonal
Clone	YTH71.3
Isotype	IgG2a
Target Name	CD66a + CD66c + CD66d
Species	Human
Immunogen	Human lymphocytes
Conjugation	Un-conjugated
Alternate Names	Normal cross-reacting antigen; Carcinoembryonic antigen-related cell adhesion molecule 6; CEAL; CD66c; CD antigen CD66c; NCA; Non-specific crossreacting antigen

### Application Instructions

Application table	Application	Dilution
	FACS	Assay-dependent
	IHC-Fr	Assay-dependent
Application Note	FACS: Use 10ul of the suggested working dilution to label 10 <sup>6</sup> cells in 100ul. * The dilutions indicate recommended starting dilutions and the optimal dilutions or concentrations should be determined by the scientist.	

### Properties

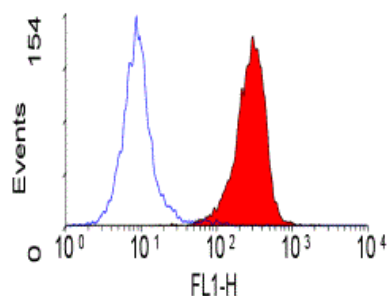
Form	Liquid
Purification	Purification with Protein G.
Buffer	PBS and 0.09% Sodium azide
Preservative	0.09% Sodium azide
Concentration	1 mg/ml

<b>Storage instruction</b>	For continuous use, store undiluted antibody at 2-8°C for up to a week. For long-term storage, aliquot and store at -20°C or below. Storage in frost free freezers is not recommended. Avoid repeated freeze/thaw cycles. Suggest spin the vial prior to opening. The antibody solution should be gently mixed before use.
<b>Note</b>	For laboratory research only, not for drug, diagnostic or other use.

## Bioinformation

<b>Gene Symbol</b>	CEACAM6
<b>Gene Full Name</b>	carcinoembryonic antigen-related cell adhesion molecule 6 (non-specific cross reacting antigen)
<b>Background</b>	This gene encodes a protein that belongs to the carcinoembryonic antigen (CEA) family whose members are glycosyl phosphatidyl inositol (GPI) anchored cell surface glycoproteins. Members of this family play a role in cell adhesion and are widely used as tumor markers in serum immunoassay determinations of carcinoma. This gene affects the sensitivity of tumor cells to adenovirus infection. The protein encoded by this gene acts as a receptor for adherent-invasive E. coli adhesion to the surface of ileal epithelial cells in patients with Crohn's disease. This gene is clustered with genes and pseudogenes of the cell adhesion molecules subgroup of the CEA family on chromosome 19. [provided by RefSeq, Apr 2014]
<b>Calculated Mw</b>	37 kDa

## Images



ARG22498 anti-CD66a + CD66c + CD66d antibody [YTH71.3] FACS image

Flow Cytometry: Human peripheral blood granulocytes stained with ARG22498 anti-CD66a + CD66c + CD66d antibody [YTH71.3].