

ARG22447
anti-CD18 / LFA1 beta antibody [PNK-I]Package: 50 µg
Store at: -20°C

Summary

Product Description	Mouse Monoclonal antibody [PNK-I] recognizes CD18 / LFA1 beta
Tested Reactivity	Camel, Pig
Tested Application	FACS, FuncSt, IP
Host	Mouse
Clonality	Monoclonal
Clone	PNK-I
Isotype	IgG1
Target Name	CD18 / LFA1 beta
Species	Pig
Immunogen	Porcine large granular lymphocytes.
Conjugation	Un-conjugated
Alternate Names	MF17; LAD; CD antigen CD18; MFI7; MAC-1; Cell surface adhesion glycoproteins LFA-1/CR3/p150,95 subunit beta; LCAMB; Integrin beta-2; Complement receptor C3 subunit beta; LFA-1; CD18

Application Instructions

Application table	Application	Dilution
	FACS	1:50 - 1:200
	FuncSt	Assay-dependent
	IP	Assay-dependent

Application Note

FuncSt: This product contains sodium azide, removal by dialysis is recommended prior to use in functional assays.

FACS: Use 10ul of the suggested working dilution to label 10⁶ cells in 100ul.

* The dilutions indicate recommended starting dilutions and the optimal dilutions or concentrations should be determined by the scientist.

Properties

Form	Liquid
Purification	Purification with Protein G.
Buffer	PBS and 0.09% Sodium azide
Preservative	0.09% Sodium azide
Concentration	1 mg/ml
Storage instruction	For continuous use, store undiluted antibody at 2-8°C for up to a week. For long-term storage, aliquot and store at -20°C or below. Storage in frost free freezers is not recommended. Avoid repeated

freeze/thaw cycles. Suggest spin the vial prior to opening. The antibody solution should be gently mixed before use.

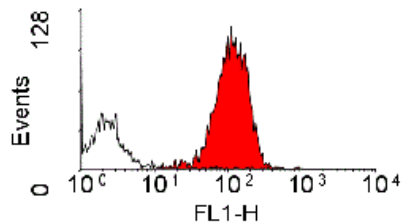
Note For laboratory research only, not for drug, diagnostic or other use.

Bioinformation

Gene Symbol	ITGB2
Gene Full Name	integrin, beta 2 (complement component 3 receptor 3 and 4 subunit)
Background	This gene encodes an integrin beta chain, which combines with multiple different alpha chains to form different integrin heterodimers. Integrins are integral cell-surface proteins that participate in cell adhesion as well as cell-surface mediated signalling. The encoded protein plays an important role in immune response and defects in this gene cause leukocyte adhesion deficiency. Alternative splicing results in multiple transcript variants. [provided by RefSeq, Dec 2014]
Function	Integrin alpha-L/beta-2 is a receptor for ICAM1, ICAM2, ICAM3 and ICAM4. Integrins alpha-M/beta-2 and alpha-X/beta-2 are receptors for the iC3b fragment of the third complement component and for fibrinogen. Integrin alpha-X/beta-2 recognizes the sequence G-P-R in fibrinogen alpha-chain. Integrin alpha-M/beta-2 recognizes P1 and P2 peptides of fibrinogen gamma chain. Integrin alpha-M/beta-2 is also a receptor for factor X. Integrin alpha-D/beta-2 is a receptor for ICAM3 and VCAM1. Triggers neutrophil transmigration during lung injury through PTK2B/PYK2-mediated activation. [UniProt]
Calculated Mw	85 kDa
PTM	Both Ser-745 and Ser-756 become phosphorylated when T-cells are exposed to phorbol esters (PubMed:11700305). Phosphorylation on Thr-758 (but not on Ser-756) allows interaction with 14-3-3 proteins (PubMed:11700305, PubMed:16301335).

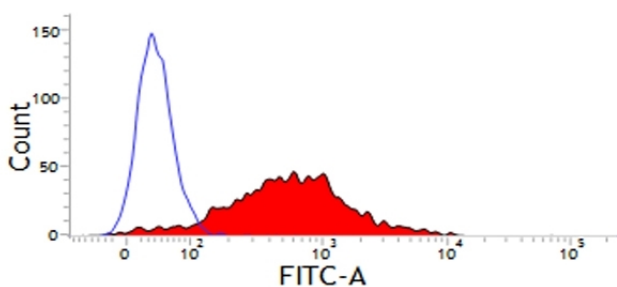
Images

ARG22447 anti-CD18 / LFA1 beta antibody [PNK-I] FACS image



Flow Cytometry: Porcine peripheral blood granulocytes stained with ARG22447 anti-CD18 / LFA1 beta antibody [PNK-I].

ARG22447 anti-CD18 / LFA1 beta antibody [PNK-I] FACS image



Flow Cytometry: Peripheral blood lymphocytes stained with ARG22447 anti-CD18 / LFA1 beta antibody [PNK-I] followed by Goat anti Mouse IgG (FITC).