

ARG22292
anti-PDI antibodyPackage: 50 µl
Store at: -20°C

Summary

| | |
|---------------------|--|
| Product Description | Rabbit Polyclonal antibody recognizes PDI |
| Tested Reactivity | Hu, Ms, Rat, Bov, Dog, Gpig, Hm, Mk, Pig, Sheep, Xenopus laevis |
| Tested Application | ICC/IF, IHC, IP, WB |
| Specificity | Detects ~58kDa. |
| Host | Rabbit |
| Clonality | Polyclonal |
| Target Name | PDI |
| Species | Rat |
| Immunogen | KLH-conjugated synthetic peptide from Rat PDI |
| Conjugation | Un-conjugated |
| Alternate Names | PDA2; Pancreas-specific protein disulfide isomerase; PDIR; PDIP; PDI; Protein disulfide-isomerase A2; PDIp; EC 5.3.4.1 |

Application Instructions

| Application table | Application | Dilution |
|-------------------|-------------|-----------------|
| | ICC/IF | 1:100 |
| | IHC | Assay-dependent |
| | IP | Assay-dependent |
| | WB | 1:1000 |

Application Note * The dilutions indicate recommended starting dilutions and the optimal dilutions or concentrations should be determined by the scientist.

Properties

| | |
|---------------------|---|
| Form | Liquid |
| Purification | Affinity purification with immunogen. |
| Buffer | PBS (pH 7.4), 0.09% Sodium azide and 50% Glycerol |
| Preservative | 0.09% Sodium azide |
| Stabilizer | 50% Glycerol |
| Concentration | 1 mg/ml |
| Storage instruction | For continuous use, store undiluted antibody at 2-8°C for up to a week. For long-term storage, aliquot and store at -20°C. Storage in frost free freezers is not recommended. Avoid repeated freeze/thaw cycles. Suggest spin the vial prior to opening. The antibody solution should be gently mixed before use. |

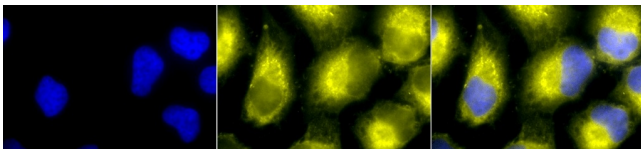
Note

For laboratory research only, not for drug, diagnostic or other use.

Bioinformation

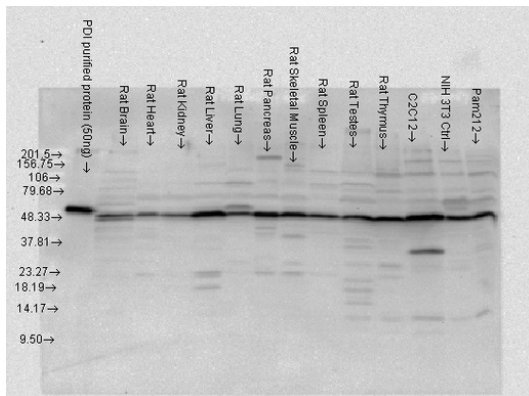
| | |
|-----------------------|--|
| Database links | GeneID: 64714 Human GeneID: 69191 Mouse Swiss-port # D3Z6P0 Mouse Swiss-port # Q13087 Human |
| Gene Symbol | Pdia2 |
| Gene Full Name | protein disulfide isomerase family A, member 2 |
| Background | Protein disulfide isomerases (EC 5.3.4.1), such as PDIP, are endoplasmic reticulum (ER) resident proteins that catalyze protein folding and thiol-disulfide interchange reactions (Desilva et al., 1996 [PubMed 8561901]).[supplied by OMIM, Mar 2008] |
| Function | Acts as an intracellular estrogen-binding protein. May be involved in modulating cellular levels and biological functions of estrogens in the pancreas. May act as a chaperone that inhibits aggregation of misfolded proteins. [UniProt] |
| Calculated Mw | 58 kDa |
| PTM | The disulfide-linked homodimer exhibits an enhanced chaperone activity. Glycosylated. |
| Cellular Localization | Endoplasmic Reticulum, Endoplasmic reticulum lumen |

Images



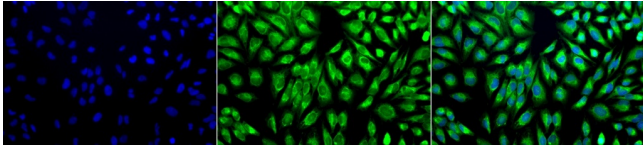
ARG22292 anti-PDI antibody ICC/IF image

Immunocytochemistry: 2% Formaldehyde (20 min at RT) fixed HeLa cells stained with ARG22292 anti-PDI antibody (yellow) at 1:100 dilution (12 hours at 4°C). Counterstain: DAPI (blue) nuclear stain at 1:40000 for 120 min at RT. Magnification: 100x. Left: DAPI (blue) nuclear stain, Middle: Primary antibody, Right: Composite.



ARG22292 anti-PDI antibody WB image

Western blot: 50 ng of PDI purified protein and 15 µg of Rat tissue/cell lysates stained with ARG22292 anti-PDI antibody at 1:4000 dilution.



ARG22292 anti-PDI antibody ICC/IF image

Immunocytochemistry: 2% Formaldehyde (20 min at RT) fixed HeLa cells stained with ARG22292 anti-PDI antibody (green) at 1:100 dilution (12 hours at 4°C). Counterstain: DAPI (blue) nuclear stain at 1:40000 for 120 min at RT. Magnification: 20x. Left: DAPI (blue) nuclear stain, Middle: Primary antibody, Right: Composite.
