

**ARG22183**  
**anti-CD107b / LAMP2 antibody [H4B4]**Package: 100 µg  
Store at: -20°C

### Summary

Product Description	Mouse Monoclonal antibody [H4B4] recognizes CD107b / LAMP2
Tested Reactivity	Hu, AGMK, R. Mk
Tested Application	EM, FACS, ICC/IF, IHC-Fr, IHC-P, IP, Puri, WB
Specificity	Human/Rhesus/African Green Monkey CD107b
Host	Mouse
Clonality	Monoclonal
Clone	H4B4
Isotype	IgG1, kappa
Target Name	CD107b / LAMP2
Species	Human
Immunogen	Human adherent peripheral blood cells
Conjugation	Un-conjugated
Alternate Names	CD antigen CD107b; LAMPB; CD107b; LGP110; Lysosome-associated membrane glycoprotein 2; LAMP-2; CD107 antigen-like family member B; Lysosome-associated membrane protein 2

### Application Instructions

Application table	Application	Dilution
	EM	Assay-dependent
	FACS	< 1 µg/10 <sup>6</sup> cells
	ICC/IF	Assay-dependent
	IHC-Fr	Assay-dependent
	IHC-P	Assay-dependent
	IP	Assay-dependent
	Puri	Assay-dependent
	WB	Assay-dependent

**Application Note** IHC-P: Antigen retrieval: Heat tissue section in a microwave oven in 10mM Sodium citrate buffer (pH 6.0) twice for 10 min.  
\* The dilutions indicate recommended starting dilutions and the optimal dilutions or concentrations should be determined by the scientist.

### Properties

Form	Liquid
------	--------

Buffer	BBS (pH 8.2)
Concentration	0.1 mg/ml
Storage instruction	For continuous use, store undiluted antibody at 2-8°C for up to a week. For long-term storage, aliquot and store at -20°C. Storage in frost free freezers is not recommended. Avoid repeated freeze/thaw cycles. Suggest spin the vial prior to opening. The antibody solution should be gently mixed before use.
Note	For laboratory research only, not for drug, diagnostic or other use.

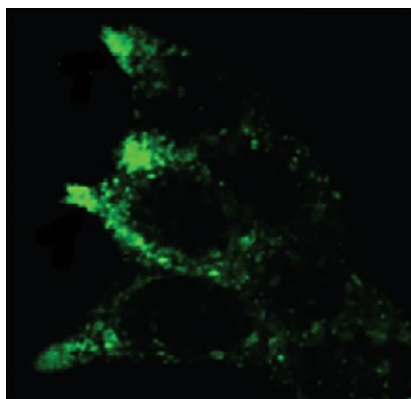
## Bioinformation

---

Database links	<a href="#">GeneID: 3920 Human</a> <a href="#">Swiss-port # P13473 Human</a>
Gene Symbol	LAMP2
Gene Full Name	lysosomal-associated membrane protein 2
Background	The protein encoded by this gene is a member of a family of membrane glycoproteins. This glycoprotein provides selectins with carbohydrate ligands. It may play a role in tumor cell metastasis. It may also function in the protection, maintenance, and adhesion of the lysosome. Alternative splicing of this gene results in multiple transcript variants encoding distinct proteins. [provided by RefSeq, Jul 2008]
Function	Implicated in tumor cell metastasis. May function in protection of the lysosomal membrane from autodigestion, maintenance of the acidic environment of the lysosome, adhesion when expressed on the cell surface (plasma membrane), and inter- and intracellular signal transduction. Protects cells from the toxic effects of methylating mutagens. [UniProt]
Calculated Mw	45 kDa
PTM	O- and N-glycosylated; some of the 16 N-linked glycans are polylactosaminoglycans.

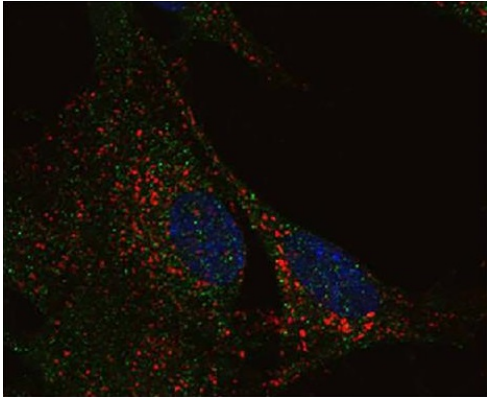
## Images

---



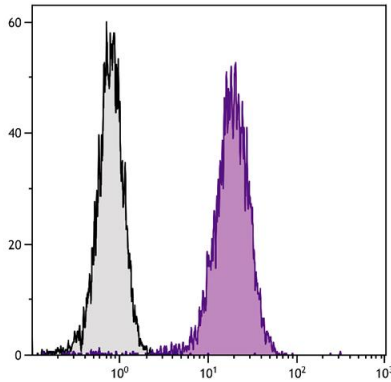
ARG22183 anti-CD107b / LAMP2 antibody [H4B4] ICC/IF image

Immunofluorescence: MYH1 siRNA transfected MCF7 cells stained with ARG22183 anti-CD107b / LAMP2 antibody [H4B4].



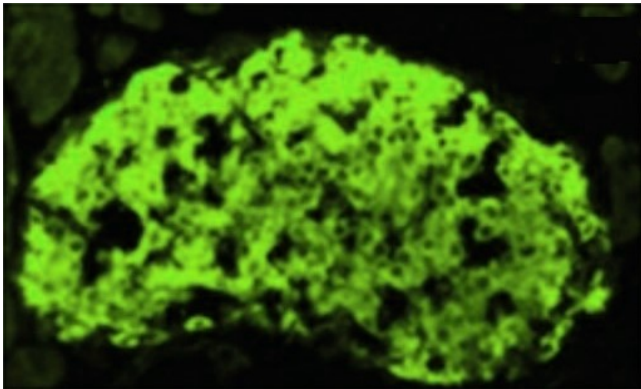
ARG22183 anti-CD107b / LAMP2 antibody [H4B4] ICC/IF image

Immunofluorescence: RA differentiated SH-SY5Y neuroblastoma cells stained with ARG22183 anti-CD107b / LAMP2 antibody [H4B4] and anti-A $\beta$ 40, followed by AF546 and AF488 conjugated secondary antibodies and DAPI.



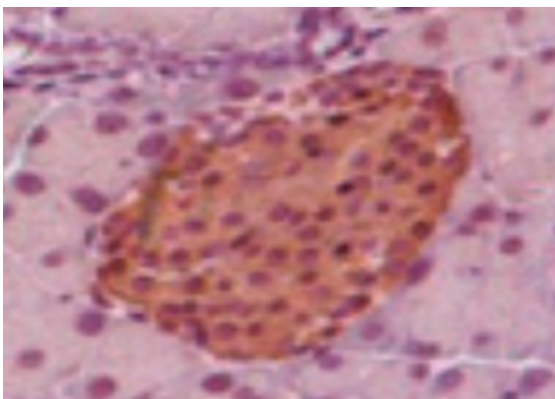
ARG22183 anti-CD107b / LAMP2 antibody [H4B4] FACS image

Flow Cytometry: Jurkat cells was intracellularly stained with ARG22183 anti-CD107b / LAMP2 antibody [H4B4], followed by ARG21884 Goat anti-Mouse IgG1 antibody (FITC), pre-adsorbed.



ARG22183 anti-CD107b / LAMP2 antibody [H4B4] IHC-Fr image

Immunohistochemistry: Frozen section of Mouse pancreas islets stained with ARG22183 anti-CD107b / LAMP2 antibody [H4B4] at 1:50 dilution.



ARG22183 anti-CD107b / LAMP2 antibody [H4B4] IHC-P image

Immunohistochemistry: Paraffin-embedded Mouse pancreas islets stained with ARG22183 anti-CD107b / LAMP2 antibody [H4B4] at 1:100 dilution. Antigen retrieval: Heat tissue section in a microwave oven in 10mM Sodium citrate buffer (pH 6.0) twice for 10 min.