

## ARG22088 anti-CD24 antibody [30-F1] (Biotin)

Package: 100 µg  
Store at: 4°C

### Summary

Product Description	Biotin-conjugated Rat Monoclonal antibody [30-F1] recognizes CD24
Tested Reactivity	Ms
Tested Application	FACS
Specificity	Mouse CD24
Host	Rat
Clonality	Monoclonal
Clone	30-F1
Isotype	IgG2c, kappa
Target Name	CD24
Species	Mouse
Immunogen	Mouse thymus or spleen
Conjugation	Biotin
Alternate Names	Signal transducer CD24; CD antigen CD24; CD24A; Small cell lung carcinoma cluster 4 antigen

### Application Instructions

Application table	Application	Dilution
	FACS	< 2 µg/10 <sup>6</sup> cells
Application Note	* The dilutions indicate recommended starting dilutions and the optimal dilutions or concentrations should be determined by the scientist.	

### Properties

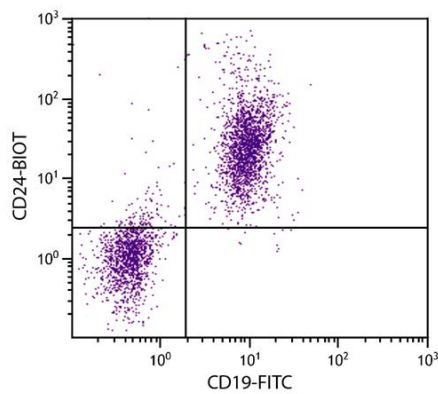
Form	Liquid
Buffer	PBS and 0.1% Sodium azide.
Preservative	0.1% Sodium azide
Concentration	0.5 mg/ml
Storage instruction	Aliquot and store in the dark at 2-8°C. Keep protected from prolonged exposure to light. Avoid repeated freeze/thaw cycles. Suggest spin the vial prior to opening. The antibody solution should be gently mixed before use.
Note	For laboratory research only, not for drug, diagnostic or other use.

### Bioinformation

Gene Symbol	CD24
Gene Full Name	CD24a antigen
Background	This gene encodes a sialoglycoprotein that is expressed on mature granulocytes and B cells and modulates growth and differentiation signals to these cells. The precursor protein is cleaved to a short 32 amino acid mature peptide which is anchored via a glycosyl phosphatidylinositol (GPI) link to the cell surface. This gene was missing from previous genome assemblies, but is properly located on chromosome 6. Non-transcribed pseudogenes have been designated on chromosomes 1, 15, 20, and Y. Alternative splicing results in multiple transcript variants. [provided by RefSeq, Apr 2014]
Function	Modulates B-cell activation responses. Signaling could be triggered by the binding of a lectin-like ligand to the CD24 carbohydrates, and transduced by the release of second messengers derived from the GPI-anchor. Promotes AG-dependent proliferation of B-cells, and prevents their terminal differentiation into antibody-forming cells. [UniProt]
Calculated Mw	8 kDa
PTM	Extensively O-glycosylated.

## Images

---



ARG22088 anti-CD24 antibody [30-F1] (Biotin) FACS image

Flow Cytometry: BALB/c Mouse splenocytes stained with ARG22088 anti-CD24 antibody [30-F1] (Biotin) and [ARG20850](#) anti-CD19 antibody [6D5] (FITC) followed by Streptavidin (PE).