

## ARG22005 anti-CD11b antibody [M1/70] (APC-Cyanine 7)

Package: 50 µg  
Store at: 4°C

### Summary

Product Description	APC-Cyanine 7-conjugated Rat Monoclonal antibody [M1/70] recognizes CD11b
Tested Reactivity	Hu, Ms, Bb, R. Mk
Tested Application	BL, FACS, ICC/IF, IHC-Fr
Specificity	Mouse/Human/Rhesus/Baboon CD11b
Host	Rat
Clonality	Monoclonal
Clone	M1/70
Isotype	IgG2b, kappa
Target Name	CD11b
Species	Mouse
Immunogen	C57BL/10 Mouse splenic T cells and concanavalin A-activated C57BL/10 splenocytes
Conjugation	APC-Cyanine 7
Alternate Names	MAC1A; CR3A; CR-3 alpha chain; Cell surface glycoprotein MAC-1 subunit alpha; Integrin alpha-M; MAC-1; CD11 antigen-like family member B; Leukocyte adhesion receptor MO1; MO1A; SLEB6; Neutrophil adherence receptor; CD antigen CD11b; CD11B

### Application Instructions

Application table	Application	Dilution
	BL	Assay-dependent
	FACS	< 0.3 µg/10 <sup>6</sup> cells
	ICC/IF	Assay-dependent
	IHC-Fr	Assay-dependent
Application Note	* The dilutions indicate recommended starting dilutions and the optimal dilutions or concentrations should be determined by the scientist.	

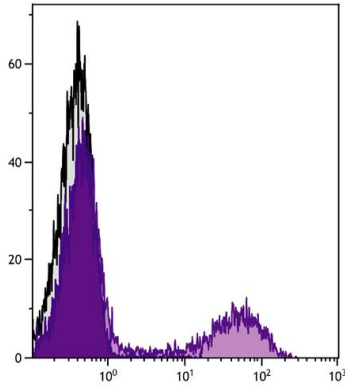
### Properties

Form	Liquid
Buffer	PBS, 0.1% Sodium azide and Sucrose.
Preservative	0.1% Sodium azide
Stabilizer	Sucrose
Concentration	0.1 mg/ml

Storage instruction	Aliquot and store in the dark at 2-8°C. Keep protected from prolonged exposure to light. Avoid repeated freeze/thaw cycles. Suggest spin the vial prior to opening. The antibody solution should be gently mixed before use.
Note	For laboratory research only, not for drug, diagnostic or other use.

## Bioinformation

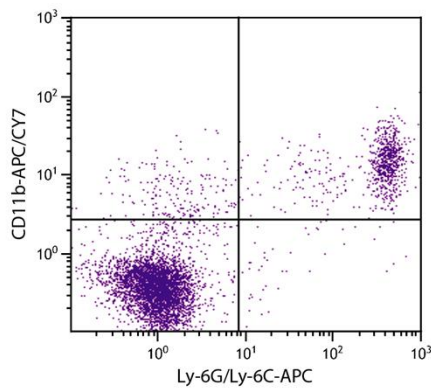
Database links	<a href="#">GeneID: 16409 Mouse</a> <a href="#">GeneID: 3684 Human</a> <a href="#">Swiss-port # P11215 Human</a>
Gene Symbol	ITGAM
Gene Full Name	integrin, alpha M (complement component 3 receptor 3 subunit)
Background	CD11b (integrin alpha M chain): Integrins are heterodimeric integral membrane proteins composed of an alpha chain and a beta chain. This I-domain containing alpha integrin combines with the beta 2 chain (ITGB2) to form a leukocyte-specific integrin referred to as macrophage receptor 1 ('Mac-1'), or inactivated-C3b (iC3b) receptor 3 ('CR3'). The alpha M beta 2 integrin is important in the adherence of neutrophils and monocytes to stimulated endothelium, and also in the phagocytosis of complement coated particles. Multiple transcript variants encoding different isoforms have been found for this gene. [provided by RefSeq, Mar 2009]
Function	CD11b: Integrin ITGAM/ITGB2 is implicated in various adhesive interactions of monocytes, macrophages and granulocytes as well as in mediating the uptake of complement-coated particles and pathogens (PubMed:9558116, PubMed:20008295). It is identical with CR-3, the receptor for the iC3b fragment of the third complement component. It probably recognizes the R-G-D peptide in C3b. Integrin ITGAM/ITGB2 is also a receptor for fibrinogen, factor X and ICAM1. It recognizes P1 and P2 peptides of fibrinogen gamma chain. Regulates neutrophil migration (PubMed:28807980). In association with beta subunit ITGB2/CD18, required for CD177-PRTN3-mediated activation of TNF primed neutrophils (PubMed:21193407). May regulate phagocytosis-induced apoptosis in extravasated neutrophils. May play a role in mast cell development. Required with TYROBP/DAP12 in microglia to control production of microglial superoxide ions which promote the neuronal apoptosis that occurs during brain development. [UniProt]
Highlight	<p>Related products:  <a href="#">CD11b antibodies</a>; <a href="#">CD11b Duos / Panels</a>; <a href="#">Anti-Rat IgG secondary antibodies</a>;</p> <p>Related news:  <a href="#">New antibody panels and duos for Tumor immune microenvironment</a>  <a href="#">Anti-SerpinB9 therapy, a new strategy for cancer therapy</a></p>
Research Area	MDSC Marker antibody; Myeloid-derived suppressor cell antibody
Calculated Mw	127 kDa



ARG22005 anti-CD11b antibody [M1/70] (APC-Cyanine 7) FACS image

Flow Cytometry: BALB/c Mouse splenocytes stained with ARG22005 anti-CD11b antibody [M1/70] (APC-Cyanine 7).

---



ARG22005 anti-CD11b antibody [M1/70] (APC-Cyanine 7) FACS image

Flow Cytometry: BALB/c Mouse splenocytes stained with ARG22005 anti-CD11b antibody [M1/70] (APC-Cyanine 7) and [ARG22107](#) anti-Ly6G + Ly6C antibody [RB6-8C5] (APC).

---