

## ARG21886 Goat anti-Mouse IgG1 antibody (HRP), pre-adsorbed

Package: 500 µl  
Store at: 4°C

### Summary

Product Description	HRP-conjugated Goat Polyclonal antibody recognizes Mouse IgG1
Tested Reactivity	Ms
Tested Application	ELISA, ELISPOT, EM, FACS, FLISA, ICC/IF, IHC-Fr, IHC-P, WB
Specificity	Reacts with the heavy chain of mouse IgG1
Host	Goat
Clonality	Polyclonal
Isotype	IgG
Target Name	IgG1
Species	Mouse
Conjugation	HRP

### Application Instructions

Pre Adsorbed Mouse IgG2a, IgG2b, IgG3, IgM, and IgA; Human immunoglobulins and pooled sera.

#### Application table

Application	Dilution
ELISA	1:4000 - 1:8000
ELISPOT	Assay-dependent
EM	Assay-dependent
FACS	Assay-dependent
FLISA	Assay-dependent
ICC/IF	Assay-dependent
IHC-Fr	Assay-dependent
IHC-P	Assay-dependent
WB	Assay-dependent

Application Note \* The dilutions indicate recommended starting dilutions and the optimal dilutions or concentrations should be determined by the scientist.

### Properties

Form	Liquid
Purification	Affinity purification with immunogen.
Buffer	50% PBS (pH 7.4) and 50% Glycerol
Stabilizer	50% Glycerol

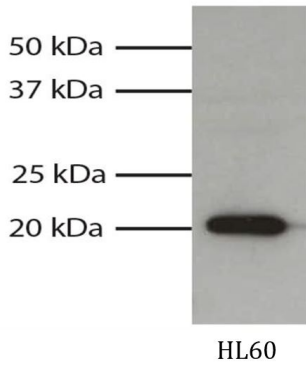
**Storage instruction**

Aliquot and store in the dark at 2-8°C. Keep protected from prolonged exposure to light. Avoid repeated freeze/thaw cycles. Suggest spin the vial prior to opening. The antibody solution should be gently mixed before use.

**Note**

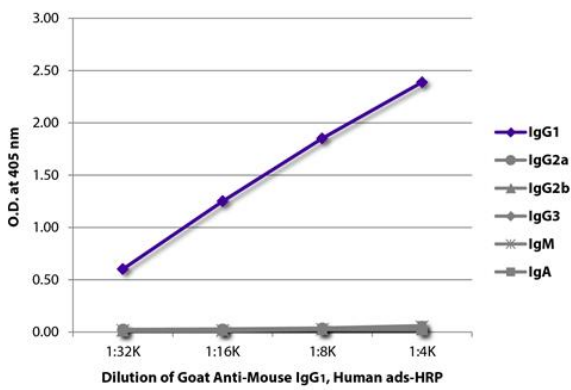
For laboratory research only, not for drug, diagnostic or other use.

**Images**



ARG21886 Goat anti-Mouse IgG1 antibody (HRP) (pre-adsorbed) WB image

Western blot: HL60 total cell lysate stained with [ARG21418](#) anti-Bax antibody [2D2]. Secondary antibodies: ARG21886 Goat anti-Mouse IgG1 antibody (HRP) (pre-adsorbed).



ARG21886 Goat anti-Mouse IgG1 antibody (HRP) (pre-adsorbed) ELISA image

ELISA: The plate was coated with purified Mouse IgG1, IgG2a, IgG2b, IgG3, IgM, and IgA. Immunoglobulins were detected with serially diluted ARG21886 Goat anti-Mouse IgG1 antibody (HRP) (pre-adsorbed).