

ARG21722 Goat anti-Rabbit IgM antibody (Biotin), pre-adsorbed

Package: 500 µg
Store at: 4°C

Summary

Product Description	Biotin-conjugated Goat Polyclonal antibody recognizes Rabbit IgM
Tested Reactivity	Rb
Tested Application	ELISA, ELISPOT, FACS, FLISA, IHC-Fr, IHC-P, WB
Specificity	The antibody reacts with the heavy chain of Rabbit IgM. The antibody is pre-adsorbed with Rabbit IgG, so the antibody may not react with Rabbit IgG, but may react with immunoglobulins from other species.
Host	Goat
Clonality	Polyclonal
Isotype	IgG
Target Name	IgM
Species	Rabbit
Conjugation	Biotin

Application Instructions

Pre Adsorbed	Rabbit IgG.																
Application table	<table><thead><tr><th>Application</th><th>Dilution</th></tr></thead><tbody><tr><td>ELISA</td><td>1:5000 - 1:20000</td></tr><tr><td>ELISPOT</td><td>Assay-dependent</td></tr><tr><td>FACS</td><td>Assay-dependent</td></tr><tr><td>FLISA</td><td>Assay-dependent</td></tr><tr><td>IHC-Fr</td><td>Assay-dependent</td></tr><tr><td>IHC-P</td><td>Assay-dependent</td></tr><tr><td>WB</td><td>Assay-dependent</td></tr></tbody></table>	Application	Dilution	ELISA	1:5000 - 1:20000	ELISPOT	Assay-dependent	FACS	Assay-dependent	FLISA	Assay-dependent	IHC-Fr	Assay-dependent	IHC-P	Assay-dependent	WB	Assay-dependent
Application	Dilution																
ELISA	1:5000 - 1:20000																
ELISPOT	Assay-dependent																
FACS	Assay-dependent																
FLISA	Assay-dependent																
IHC-Fr	Assay-dependent																
IHC-P	Assay-dependent																
WB	Assay-dependent																
Application Note	* The dilutions indicate recommended starting dilutions and the optimal dilutions or concentrations should be determined by the scientist.																

Properties

Form	Liquid
Purification	Affinity purification with immunogen.
Buffer	PBS and 0.1% Sodium azide.
Preservative	0.1% Sodium azide
Concentration	0.5 mg/ml

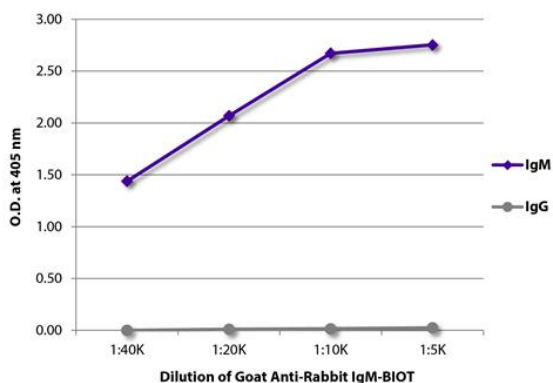
Storage instruction

Aliquot and store in the dark at 2-8°C. Keep protected from prolonged exposure to light. Avoid repeated freeze/thaw cycles. Suggest spin the vial prior to opening. The antibody solution should be gently mixed before use.

Note

For laboratory research only, not for drug, diagnostic or other use.

Images



ARG21722 Goat anti-Rabbit IgM antibody (Biotin) (pre-adsorbed) ELISA image

ELISA: The plate was coated with purified rabbit IgM and IgG. Immunoglobulins were detected with serially diluted ARG21722 Goat anti-Rabbit IgM antibody (Biotin) (pre-adsorbed) followed by [ARG23912](#) Streptavidin (HRP).