

## ARG21632 Rat anti-Mouse Lambda Light Chain antibody [JC5-1] (Biotin)

Package: 250 µg  
Store at: 4°C

### Summary

Product Description	Biotin-conjugated Rat Monoclonal antibody [JC5-1] recognizes Mouse Lambda Light Chain
Tested Reactivity	Ms
Tested Application	ELISA, FACS, FLISA, IHC-Fr, WB
Host	Rat
Clonality	Monoclonal
Clone	JC5-1
Isotype	IgG2b, kappa
Target Name	Lambda Light Chain
Species	Mouse
Conjugation	Biotin

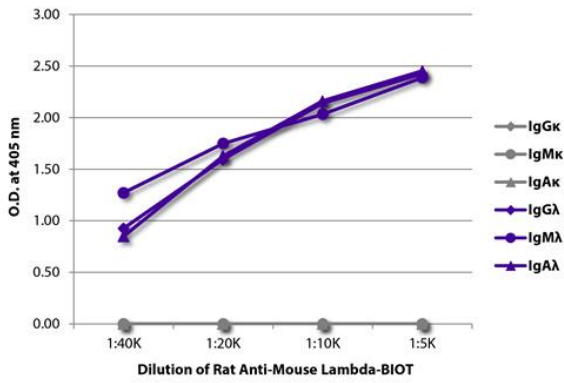
### Application Instructions

Application table	Application	Dilution
	ELISA	1:5000 - 1:10000
	FACS	< 1 ug/10 <sup>6</sup> cells
	FLISA	Assay-dependent
	IHC-Fr	Assay-dependent
	WB	Assay-dependent

**Application Note**  
WB: Under non-reducing condition.  
\* The dilutions indicate recommended starting dilutions and the optimal dilutions or concentrations should be determined by the scientist.

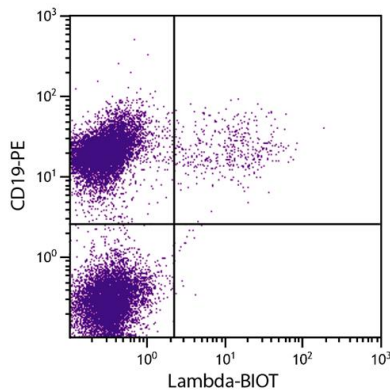
### Properties

Form	Liquid
Buffer	PBS and 0.1% Sodium azide.
Preservative	0.1% Sodium azide
Concentration	0.5 mg/ml
Storage instruction	Aliquot and store in the dark at 2-8°C. Keep protected from prolonged exposure to light. Avoid repeated freeze/thaw cycles. Suggest spin the vial prior to opening. The antibody solution should be gently mixed before use.
Note	For laboratory research only, not for drug, diagnostic or other use.



ARG21632 Rat anti-Mouse Lambda Light Chain antibody [JC5-1] (Biotin) ELISA image

ELISA: The plate was coated with purified Mouse IgGκ, IgMκ, IgAκ, IgGλ, IgMλ, and IgAλ. Immunoglobulins were detected with serially diluted ARG21632 Rat anti-Mouse Lambda Light Chain antibody [JC5-1] (Biotin) followed by [ARG23912](#) Streptavidin (HRP).



ARG21632 Rat anti-Mouse Lambda Light Chain antibody [JC5-1] (Biotin) FACS image

Flow Cytometry: BALB/c Mouse splenocytes stained with ARG21632 Rat anti-Mouse Lambda Light Chain antibody [JC5-1] (Biotin) and [ARG20852](#) anti-CD19 antibody [6D5] (PE) followed by Streptavidin (FITC).