

## ARG21616 Rat anti-Mouse IgA antibody [11-44-2]

Package: 250 µg  
Store at: -20°C

### Summary

Product Description	Rat Monoclonal antibody [11-44-2] recognizes Mouse IgA
Tested Reactivity	Ms
Tested Application	ELISA, FACS, FLISA, IHC-Fr, IHC-P, WB
Host	Rat
Clonality	Monoclonal
Clone	11-44-2
Isotype	IgG1, kappa
Target Name	IgA
Species	Mouse
Conjugation	Un-conjugated

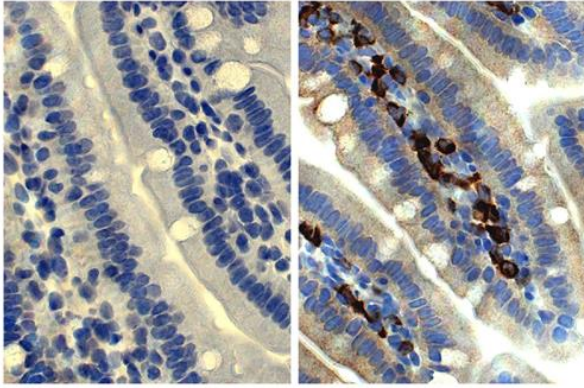
### Application Instructions

Application table	Application	Dilution
	ELISA	1 - 0.05 µg/ml
	FACS	0.2 - 1 µg/10 <sup>6</sup> cells
	FLISA	Assay-dependent
	IHC-Fr	2 - 5 µg/ml
	IHC-P	2 - 10 µg/ml
	WB	Assay-dependent

**Application Note** IHC-P: Antigen Retrieval: Boil tissue section in Citrate buffer (pH 6.0) for 20 min.  
\* The dilutions indicate recommended starting dilutions and the optimal dilutions or concentrations should be determined by the scientist.

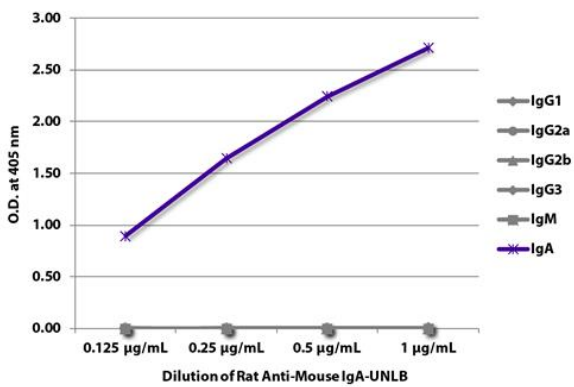
### Properties

Form	Liquid
Buffer	BBS (pH 8.2)
Concentration	0.5 mg/ml
Storage instruction	For continuous use, store undiluted antibody at 2-8°C for up to a week. For long-term storage, aliquot and store at -20°C. Storage in frost free freezers is not recommended. Avoid repeated freeze/thaw cycles. Suggest spin the vial prior to opening. The antibody solution should be gently mixed before use.
Note	For laboratory research only, not for drug, diagnostic or other use.



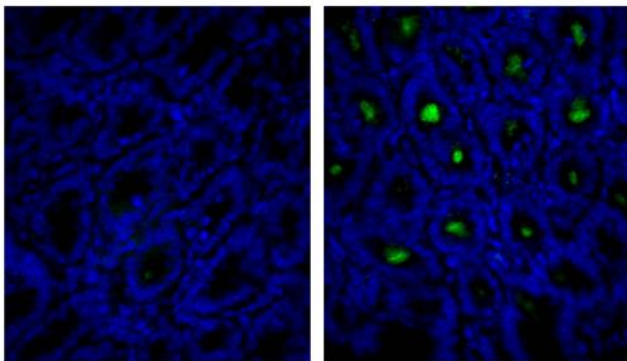
ARG21616 Rat anti-Mouse IgA antibody [11-44-2] IHC-P image

Immunohistochemistry: Paraffin-embedded Mouse small intestine tissue. Antigen Retrieval: Boil tissue section in Citrate buffer (pH 6.0) for 20 min. The tissue section was stained with ARG21616 Rat anti-Mouse IgA antibody [11-44-2] (right) at 2 - 10 µg/ml dilution followed by an HRP-conjugated secondary antibody, DAB and hematoxylin. Control (left).



ARG21616 Rat anti-Mouse IgA antibody [11-44-2] ELISA image

ELISA: The plate was coated with purified Mouse IgM, IgG, and IgA. Immunoglobulins were detected with serially diluted ARG21616 Rat anti-Mouse IgA antibody [11-44-2] followed by [ARG21696](#) Mouse anti-Rat IgG1 antibody [G17E7] (HRP).



ARG21616 Rat anti-Mouse IgA antibody [11-44-2] IHC-Fr image

Immunohistochemistry: Frozen section of Mouse intestine tissue stained with [ARG20689](#) Rat IgG1 Isotype Control antibody [KLH/G1-2-2] (left) and ARG21616 Rat anti-Mouse IgA antibody [11-44-2] (right) (2-5 µg/ml) followed by [ARG21695](#) Mouse anti-Rat IgG1 antibody [G17E7] (FITC) and DAPI.