

## ARG11152 anti-Visinin like 1 antibody [3A9]

Package: 50 µl  
Store at: -20°C

### Summary

Product Description	Mouse Monoclonal antibody [3A9] recognizes Visinin like 1
Tested Reactivity	Hu, Ms, Rat, Cow, Pig
Tested Application	IHC-Fr, WB
Host	Mouse
Clonality	Monoclonal
Clone	3A9
Isotype	IgG1
Target Name	Visinin like 1
Species	Human
Immunogen	Recombinant full-length Human Visinin like 1.
Conjugation	Un-conjugated
Alternate Names	HPCAL3; HUVISL1; Visinin-like protein 1; HLP3; Hippocalcin-like protein 3; VILIP; VLP-1; VILIP-1

### Application Instructions

Application table	Application	Dilution
	IHC-Fr	1:500 - 1:1000
	WB	1:1000 - 1:2000
Application Note	* The dilutions indicate recommended starting dilutions and the optimal dilutions or concentrations should be determined by the scientist.	
Observed Size	~ 18 kDa	

### Properties

Form	Liquid
Purification	Purified
Buffer	PBS, 5 mM Sodium azide and 50% Glycerol.
Preservative	5 mM Sodium azide
Stabilizer	50% Glycerol
Concentration	1 mg/ml
Storage instruction	For continuous use, store undiluted antibody at 2-8°C for up to a week. For long-term storage, aliquot and store at -20°C. Storage in frost free freezers is not recommended. Avoid repeated freeze/thaw cycles. Suggest spin the vial prior to opening. The antibody solution should be gently mixed before use.

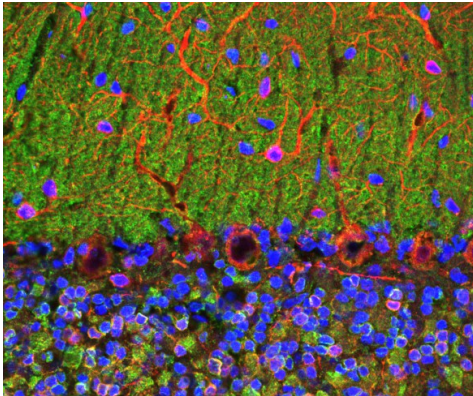
Note

For laboratory research only, not for drug, diagnostic or other use.

## Bioinformation

Gene Symbol	VSNL1
Gene Full Name	visinin-like 1
Background	This gene is a member of the visinin/recoverin subfamily of neuronal calcium sensor proteins. The encoded protein is strongly expressed in granule cells of the cerebellum where it associates with membranes in a calcium-dependent manner and modulates intracellular signaling pathways of the central nervous system by directly or indirectly regulating the activity of adenylyl cyclase. Alternatively spliced transcript variants have been observed, but their full-length nature has not been determined. [provided by RefSeq, Jul 2008]
Function	Regulates (in vitro) the inhibition of rhodopsin phosphorylation in a calcium-dependent manner. [UniProt]
Calculated Mw	22 kDa

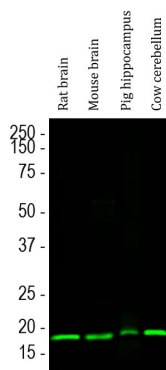
## Images



ARG11152 anti-Visinin like 1 antibody [3A9] IHC-Fr image

Immunohistochemistry: Frozen section of adult rat cerebellum tissue stained with ARG11152 anti-Visinin like 1 antibody [3A9] (green) at 1:1000 dilution, and co-stained with anti-MAP2 antibody (red) at 1:10000 dilution. DAPI (blue) for nuclear staining.

Visinin like 1 antibody reveals perikarya and synaptic regions in the neuron rich granular layer (bottom) and synapse rich molecular layer (top). Note that the large prominent Purkinje neurons at the junction of these two layers do not stain with the Visinin like 1 antibody.



ARG11152 anti-Visinin like 1 antibody [3A9] WB image

Western blot: Rat brain, Mouse brain, Pig hippocampus and Cow cerebellum lysates stained with ARG11152 anti-Visinin like 1 antibody [3A9] at 1:1000 dilution.