

ARG11140 anti-Neurofilament NF-L (C-ter) antibody

Package: 50 µl
Store at: -20°C

Summary

Product Description	Rabbit Polyclonal antibody recognizes Neurofilament NF-L (C-ter)
Tested Reactivity	Hu, Ms, Rat, Cow, Pig
Tested Application	IHC-Fr, WB
Host	Rabbit
Clonality	Polyclonal
Isotype	IgG
Target Name	Neurofilament NF-L (C-ter)
Species	Rat
Immunogen	KLH-conjugated synthetic peptide around the C-terminal region of Rat Neurofilament NF-L. (C-GEEEDTKESEEEEKKEESAGEEQAAKKDD)
Conjugation	Un-conjugated
Alternate Names	Neurofilament triplet L protein; 68 kDa neurofilament protein; CMT1F; NF68; NFL; CMT2E; Neurofilament light polypeptide; NF-L; PPP1R110

Application Instructions

Application table	Application	Dilution
	IHC-Fr	1:5000
	WB	1:10000 - 1:20000
Application Note	* The dilutions indicate recommended starting dilutions and the optimal dilutions or concentrations should be determined by the scientist.	
Observed Size	~ 63 kDa	

Properties

Form	Liquid
Purification	Affinity purified.
Buffer	PBS, 5 mM Sodium azide and 50% Glycerol.
Preservative	5 mM Sodium azide
Stabilizer	50% Glycerol
Concentration	1 mg/ml
Storage instruction	For continuous use, store undiluted antibody at 2-8°C for up to a week. For long-term storage, aliquot and store at -20°C. Storage in frost free freezers is not recommended. Avoid repeated freeze/thaw cycles. Suggest spin the vial prior to opening. The antibody solution should be gently mixed before use.

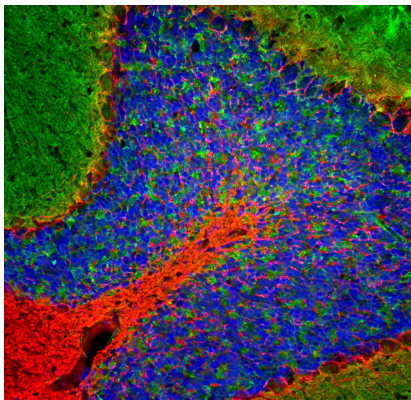
Note

For laboratory research only, not for drug, diagnostic or other use.

Bioinformation

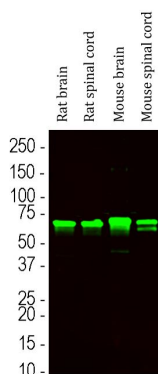
Gene Symbol	NEFL
Gene Full Name	neurofilament, light polypeptide
Background	Neurofilaments are type IV intermediate filament heteropolymers composed of light, medium, and heavy chains. Neurofilaments comprise the axoskeleton and they functionally maintain the neuronal caliber. They may also play a role in intracellular transport to axons and dendrites. This gene encodes the light chain neurofilament protein. Mutations in this gene cause Charcot-Marie-Tooth disease types 1F (CMT1F) and 2E (CMT2E), disorders of the peripheral nervous system that are characterized by distinct neuropathies. A pseudogene has been identified on chromosome Y. [provided by RefSeq, Oct 2008]
Function	Neurofilaments usually contain three intermediate filament proteins: L, M, and H which are involved in the maintenance of neuronal caliber. [UniProt]
Calculated Mw	62 kDa
PTM	O-glycosylated. Phosphorylated in the head and rod regions by the PKC kinase PKN1, leading to the inhibition of polymerization. Ubiquitinated in the presence of TRIM2 and UBE2D1. [UniProt]

Images



ARG11140 anti-Neurofilament NF-L (C-ter) antibody IHC-Fr image

Immunohistochemistry: Frozen section of Rat cerebellum tissue stained with ARG11140 anti-Neurofilament NF-L (C-ter) antibody (red) at 1:5000 dilution, and co-stained with [ARG11148](#) anti-beta Synuclein antibody [6A10] (green) at 1:500 dilution. Hoechst (blue) for nuclear staining. (Sample preparation: Following transcardial perfusion of rat with 4% paraformaldehyde, brain was post fixed for 24 hours, cut to 45 μ M, and free-floating sections were stained with above antibodies.).



ARG11140 anti-Neurofilament NF-L (C-ter) antibody WB image

Western blot: Rat brain, Rat spinal cord, Mouse brain and Mouse spinal cord lysates stained with ARG11140 anti-Neurofilament NF-L (C-ter) antibody at 1:20000 dilution.