

ARG11131
anti-Peripherin antibody [8G2]Package: 50 µl
Store at: -20°C

Summary

Product Description	Mouse Monoclonal antibody [8G2] recognizes Peripherin
Tested Reactivity	Hu, Ms, Rat, Cow, Pig
Tested Application	ICC/IF, IHC-Fr, WB
Host	Mouse
Clonality	Monoclonal
Clone	8G2
Isotype	IgG1
Target Name	Peripherin
Species	Rat
Immunogen	Recombinant Rat Peripherin.
Conjugation	Un-conjugated
Alternate Names	Peripherin; NEF4; PRPH1; Neurofilament 4

Application Instructions

Application table	Application	Dilution
	ICC/IF	1:500
	IHC-Fr	1:500
	WB	1:500 - 1:1000
Application Note	* The dilutions indicate recommended starting dilutions and the optimal dilutions or concentrations should be determined by the scientist.	
Observed Size	~ 54 kDa	

Properties

Form	Liquid
Purification	Purified
Buffer	PBS, 5 mM Sodium azide and 50% Glycerol.
Preservative	5 mM Sodium azide
Stabilizer	50% Glycerol
Concentration	1 mg/ml
Storage instruction	For continuous use, store undiluted antibody at 2-8°C for up to a week. For long-term storage, aliquot and store at -20°C. Storage in frost free freezers is not recommended. Avoid repeated freeze/thaw cycles. Suggest spin the vial prior to opening. The antibody solution should be gently mixed before use.

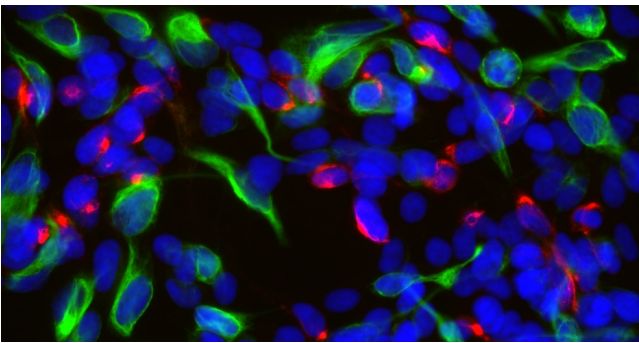
Note

For laboratory research only, not for drug, diagnostic or other use.

Bioinformation

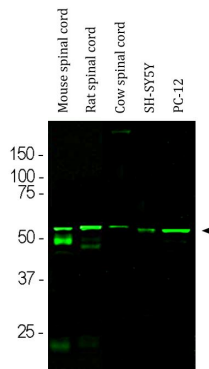
Gene Symbol	PRPH
Gene Full Name	peripherin
Background	This gene encodes a cytoskeletal protein found in neurons of the peripheral nervous system. The encoded protein is a type III intermediate filament protein with homology to other cytoskeletal proteins such as desmin, and is a different protein that the peripherin found in photoreceptors. Mutations in this gene have been associated with susceptibility to amyotrophic lateral sclerosis. [provided by RefSeq, Jul 2008]
Function	Class-III neuronal intermediate filament protein. [UniProt]
Calculated Mw	54 kDa

Images



ARG11131 anti-Peripherin antibody [8G2] ICC/IF image

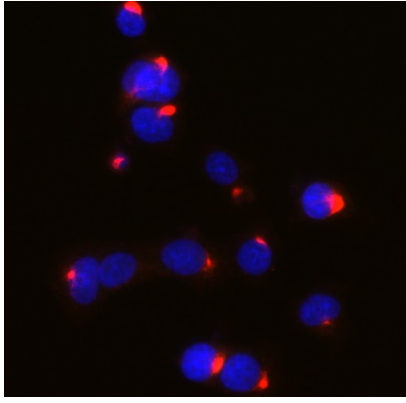
Immunofluorescence: SH-SY5Y cells stained with ARG11131 anti-Peripherin antibody [8G2] (red) at 1:500 dilution, and co-stained with anti-Vimentin antibody (green) at 1:10000 dilution. DAPI (blue) for nuclear staining.



ARG11131 anti-Peripherin antibody [8G2] WB image

Western blot: Mouse spinal cord, Rat spinal cord, Cow spinal cord, SH-SY5Y and PC-12 cell lysates stained with ARG11131 anti-Peripherin antibody [8G2] at 1:500 dilution.

The band at ~ 57 kDa corresponds to the peripherin protein. Bands at 50 and 25 kDa detected in the mouse spinal cord lysate, correspond to the heavy and light chains of mouse IgG.



ARG11131 anti-Peripherin antibody [8G2] ICC/IF image

Immunofluorescence: PC-12 cells stained with ARG11131 anti-Peripherin antibody [8G2] (red) at 1:500 dilution, and co-stained with anti-Vimentin antibody (green) at 1:10000 dilution. DAPI (blue) for nuclear staining.