

ARG11086 anti-AKAP12 / Gravin antibody

Package: 125 µg
Store at: -20°C

Summary

Product Description	Sheep Polyclonal antibody recognizes AKAP12 / Gravin
Tested Reactivity	Rat
Tested Application	IHC-P, IP, WB
Host	Sheep
Clonality	Polyclonal
Isotype	IgG
Target Name	AKAP12 / Gravin
Species	Rat
Immunogen	Recombinant protein corresponding to aa. 620-1596 of Rat AKAP12 / Gravin.
Conjugation	Un-conjugated
Alternate Names	SSeCKS; AKAP250; A-kinase anchor protein 250 kDa; Gravin; A-kinase anchor protein 12; Myasthenia gravis autoantigen; AKAP 250; AKAP-12

Application Instructions

Application table	Application	Dilution
	IHC-P	Assay-dependent
	IP	Assay-dependent
	WB	2 - 5 µg/ml
Application Note	* The dilutions indicate recommended starting dilutions and the optimal dilutions or concentrations should be determined by the scientist.	
Positive Control	Rat aortic smooth muscle	

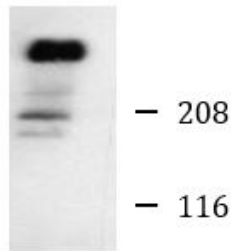
Properties

Form	Liquid
Purification	Ammonium sulfate precipitation.
Buffer	PBS and 0.08% Sodium azide.
Preservative	0.08% Sodium azide
Storage instruction	For continuous use, store undiluted antibody at 2-8°C for up to a week. For long-term storage, aliquot and store at -20°C or below. Storage in frost free freezers is not recommended. Avoid repeated freeze/thaw cycles. Suggest spin the vial prior to opening. The antibody solution should be gently mixed before use.
Note	For laboratory research only, not for drug, diagnostic or other use.

Bioinformation

Gene Symbol	AKAP12
Gene Full Name	A kinase (PRKA) anchor protein 12
Background	The A-kinase anchor proteins (AKAPs) are a group of structurally diverse proteins, which have the common function of binding to the regulatory subunit of protein kinase A (PKA) and confining the holoenzyme to discrete locations within the cell. This gene encodes a member of the AKAP family. The encoded protein is expressed in endothelial cells, cultured fibroblasts, and osteosarcoma cells. It associates with protein kinases A and C and phosphatase, and serves as a scaffold protein in signal transduction. This protein and RII PKA colocalize at the cell periphery. This protein is a cell growth-related protein. Antibodies to this protein can be produced by patients with myasthenia gravis. Alternative splicing of this gene results in two transcript variants encoding different isoforms. [provided by RefSeq, Jul 2008]
Function	Anchoring protein that mediates the subcellular compartmentation of protein kinase A (PKA) and protein kinase C (PKC). [UniProt]
Calculated Mw	181 kDa (Rat)
Cellular Localization	Cytoplasm, cell cortex. Cytoplasm, cytoskeleton. Membrane; Lipid-anchor. Note=May be part of the cortical cytoskeleton. [UniProt]

Images



Rat aortic smooth muscle

ARG11086 anti-AKAP12 / Gravin antibody WB image

Western blot: Cultured Rat aortic smooth muscle cell lysate stained with ARG11086 anti-AKAP12 / Gravin antibody.