

ARG11072 anti-Norepinephrine Transporter antibody [NET-05]

Package: 100 µl
Store at: -20°C

Summary

Product Description	Mouse Monoclonal antibody [NET-05] recognizes Norepinephrine Transporter
Tested Reactivity	Ms, Rat
Species Does Not React With	Hu
Tested Application	WB
Specificity	This antibody recognizes Mouse and Rat NET. It does not recognize Human NET.
Host	Mouse
Clonality	Monoclonal
Clone	NET-05
Isotype	IGg2b
Target Name	Norepinephrine Transporter
Species	Mouse
Immunogen	KLH-conjugated synthetic peptide around the N-terminal region of Mouse Norepinephrine Transporter.
Conjugation	Un-conjugated
Alternate Names	SLC6A5; Solute carrier family 6 member 2; NAT1; Norepinephrine transporter; NET; Sodium-dependent noradrenaline transporter; NET1

Application Instructions

Predict Reactivity Note	Sequence homology: Cow (92%); Cat, Human and non-human primate (85%)				
Application table	<table><thead><tr><th>Application</th><th>Dilution</th></tr></thead><tbody><tr><td>WB</td><td>1:1000</td></tr></tbody></table>	Application	Dilution	WB	1:1000
Application	Dilution				
WB	1:1000				
Application Note	* The dilutions indicate recommended starting dilutions and the optimal dilutions or concentrations should be determined by the scientist.				

Properties

Form	Liquid
Purification	This antibody is prepared by Ammonium Sulfate precipitation from hybridoma culture media followed by dialysis against PBS.
Buffer	PBS and 50% Glycerol.
Stabilizer	50% Glycerol
Storage instruction	For continuous use, store undiluted antibody at 2-8°C for up to a week. For long-term storage, aliquot and store at -20°C. Storage in frost free freezers is not recommended. Avoid repeated freeze/thaw cycles. Suggest spin the vial prior to opening. The antibody solution should be gently mixed before use.

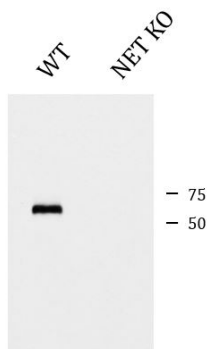
Note

For laboratory research only, not for drug, diagnostic or other use.

Bioinformation

Gene Symbol	SLC6A2
Gene Full Name	solute carrier family 6 (neurotransmitter transporter), member 2
Background	This gene encodes a member of the sodium:neurotransmitter symporter family. This member is a multi-pass membrane protein, which is responsible for reuptake of norepinephrine into presynaptic nerve terminals and is a regulator of norepinephrine homeostasis. Mutations in this gene cause orthostatic intolerance, a syndrome characterized by lightheadedness, fatigue, altered mentation and syncope. Alternatively spliced transcript variants encoding different isoforms have been identified in this gene.[provided by RefSeq, Feb 2010]
Function	Amine transporter. Terminates the action of noradrenaline by its high affinity sodium-dependent reuptake into presynaptic terminals. [UniProt]
Calculated Mw	69 kDa
Cellular Localization	Cell membrane; Multi-pass membrane protein. [UniProt]

Images



ARG11072 anti-Norepinephrine Transporter antibody [NET-05] WB image

Western blot: Mouse cortex homogenate after a 1000xg spin to eliminate non-homogenized tissue fragments of wild type (WT) and NET knockout (NET KO) tissue. The blots were stained with ARG11072 anti-Norepinephrine Transporter antibody [NET-05].