

ARG11053 anti-CXCR1 antibody

Package: 50 µg
Store at: -20°C

Summary

Product Description	Rabbit Polyclonal antibody recognizes CXCR1
Tested Reactivity	Hu
Tested Application	IHC-P, WB
Host	Rabbit
Clonality	Polyclonal
Isotype	IgG
Target Name	CXCR1
Species	Human
Immunogen	Synthetic peptide around the N-terminus of Human CXCR1. (DEDYSPCMLETETLN)
Conjugation	Un-conjugated
Alternate Names	IL8RBA; C-C-CKR-1; IL-8R A; CKR-1; High affinity interleukin-8 receptor A; IL8RA; C-C; CD128; CD antigen CD181; CDw128a; CXCR-1; CXC-R1; IL-8 receptor type 1; CD181; IL8R1; CMKAR1; C-X-C chemokine receptor type 1

Application Instructions

Application table	Application	Dilution
	IHC-P	1 - 5 µg/ml
	WB	0.5 - 1 µg/ml
Application Note	* The dilutions indicate recommended starting dilutions and the optimal dilutions or concentrations should be determined by the scientist.	
Observed Size	~ 40 kDa	

Properties

Form	Liquid
Purification	Affinity purification with immunogen.
Buffer	PBS, 0.025% Sodium azide and 2.5% BSA.
Preservative	0.025% Sodium azide
Stabilizer	2.5% BSA
Concentration	0.5 mg/ml
Storage instruction	For continuous use, store undiluted antibody at 2-8°C for up to a week. For long-term storage, aliquot and store at -20°C or below. Storage in frost free freezers is not recommended. Avoid repeated freeze/thaw cycles. Suggest spin the vial prior to opening. The antibody solution should be gently mixed before use.

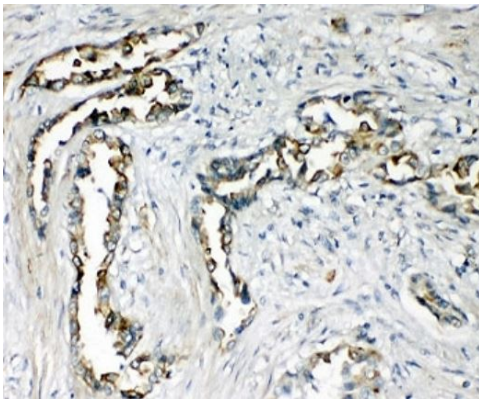
Note

For laboratory research only, not for drug, diagnostic or other use.

Bioinformation

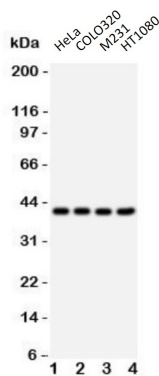
Gene Symbol	CXCR1
Gene Full Name	chemokine (C-X-C motif) receptor 1
Background	The protein encoded by this gene is a member of the G-protein-coupled receptor family. This protein is a receptor for interleukin 8 (IL8). It binds to IL8 with high affinity, and transduces the signal through a G-protein activated second messenger system. Knockout studies in mice suggested that this protein inhibits embryonic oligodendrocyte precursor migration in developing spinal cord. This gene, IL8RB, a gene encoding another high affinity IL8 receptor, as well as IL8RBP, a pseudogene of IL8RB, form a gene cluster in a region mapped to chromosome 2q33-q36. [provided by RefSeq, Jul 2008]
Function	Receptor to interleukin-8, which is a powerful neutrophils chemotactic factor. Binding of IL-8 to the receptor causes activation of neutrophils. This response is mediated via a G-protein that activate a phosphatidylinositol-calcium second messenger system. This receptor binds to IL-8 with a high affinity and to MGSA (GRO) with a low affinity. [UniProt]
Calculated Mw	40 kDa

Images



ARG11053 anti-CXCR1 antibody IHC-P image

Immunohistochemistry: Paraffin-embedded Human lung cancer tissue stained with ARG11053 anti-CXCR1 antibody.



ARG11053 anti-CXCR1 antibody WB image

Western blot: 1) HeLa, 2) COLO320, 3) M231 and 4) HT1080 cell lysates stained with ARG11053 anti-CXCR1 antibody.