

ARG11043 anti-DRD2 / Dopamine Receptor D2 antibody

Package: 100 µl
Store at: -20°C

Summary

Product Description	Rabbit Polyclonal antibody recognizes DRD2 / Dopamine Receptor D2
Tested Reactivity	Hu, Rat
Tested Application	ELISA, ICC/IF, IHC-P, IP, WB
Specificity	The antibody has no cross reactivity to D1 receptor (9% homology), D3 receptor (18% homology), D4 receptor (27% homology) and D5 receptor (9% homology).
Host	Rabbit
Clonality	Polyclonal
Isotype	IgG
Target Name	DRD2 / Dopamine Receptor D2
Species	Human
Immunogen	Synthetic peptide from Human Dopamine D2 receptor.
Conjugation	Un-conjugated
Alternate Names	D2R; D2DR; D(2) dopamine receptor; Dopamine D2 receptor

Application Instructions

Application table	Application	Dilution
	ELISA	1:50000
	ICC/IF	1:200
	IHC-P	1:200
	IP	1:200
	WB	1:1000 - 1:5000
Application Note	* The dilutions indicate recommended starting dilutions and the optimal dilutions or concentrations should be determined by the scientist.	

Properties

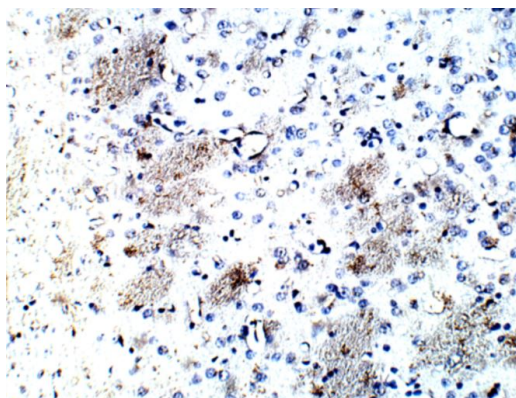
Form	Liquid
Purification	Affinity purified.
Buffer	Tris-Glycine Buffer (pH 7.4 - 7.8), Hepes, cryo-protective agents, 0.02% Sodium azide, 30% Glycerol and 0.5% BSA.
Preservative	0.02% Sodium azide
Stabilizer	30% Glycerol and 0.5% BSA

Concentration	0.55 mg/ml
Storage instruction	For continuous use, store undiluted antibody at 2-8°C for up to a week. For long-term storage, aliquot and store at -20°C. Storage in frost free freezers is not recommended. Avoid repeated freeze/thaw cycles. Suggest spin the vial prior to opening. The antibody solution should be gently mixed before use.
Note	For laboratory research only, not for drug, diagnostic or other use.

Bioinformation

Gene Symbol	DRD2
Gene Full Name	dopamine receptor D2
Background	This gene encodes the D2 subtype of the dopamine receptor. This G-protein coupled receptor inhibits adenylyl cyclase activity. A missense mutation in this gene causes myoclonus dystonia; other mutations have been associated with schizophrenia. Alternative splicing of this gene results in two transcript variants encoding different isoforms. A third variant has been described, but it has not been determined whether this form is normal or due to aberrant splicing. [provided by RefSeq, Jul 2008]
Function	Dopamine receptor whose activity is mediated by G proteins which inhibit adenylyl cyclase. [UniProt]
Calculated Mw	51 kDa
Cellular Localization	Cell membrane; Multi-pass membrane protein [UniProt]

Images



ARG11043 anti-DRD2 / Dopamine Receptor D2 antibody IHC-P image

Immunohistochemistry: Paraffin-embedded Rat brain stained with ARG11043 anti-DRD2 / Dopamine Receptor D2 antibody at 1:100 dilution. (20X magnification).