

## ARG11029 anti-GLUT5 antibody

Package: 50 µg  
Store at: -20°C

### Summary

Product Description	Rabbit Polyclonal antibody recognizes GLUT5
Tested Reactivity	Hu
Tested Application	WB
Host	Rabbit
Clonality	Polyclonal
Isotype	IgG
Target Name	GLUT5
Species	Human
Immunogen	Synthetic peptide around aa. 481-501 of Human Glut5. (VSEVYPEKEELKELPPVTSEQ)
Conjugation	Un-conjugated
Alternate Names	GLUT5; Glucose transporter type 5, small intestine; Solute carrier family 2, facilitated glucose transporter member 5; GLUT-5; Fructose transporter

### Application Instructions

Application table	Application	Dilution
	WB	0.5 - 1 µg/ml
Application Note	* The dilutions indicate recommended starting dilutions and the optimal dilutions or concentrations should be determined by the scientist.	
Observed Size	~ 55 kDa	

### Properties

Form	Liquid
Purification	Affinity purification with immunogen.
Buffer	PBS, 0.025% Sodium azide and 2.5% BSA.
Preservative	0.025% Sodium azide
Stabilizer	2.5% BSA
Concentration	0.5 mg/ml
Storage instruction	For continuous use, store undiluted antibody at 2-8°C for up to a week. For long-term storage, aliquot and store at -20°C or below. Storage in frost free freezers is not recommended. Avoid repeated freeze/thaw cycles. Suggest spin the vial prior to opening. The antibody solution should be gently mixed before use.
Note	For laboratory research only, not for drug, diagnostic or other use.

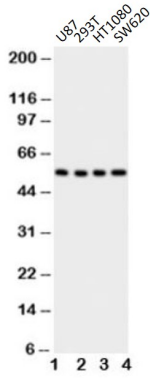
## Bioinformation

---

Gene Symbol	SLC2A5
Gene Full Name	solute carrier family 2 (facilitated glucose/fructose transporter), member 5
Function	Cytochalasin B-sensitive carrier. Seems to function primarily as a fructose transporter. [UniProt]
Calculated Mw	55 kDa

## Images

---



ARG11029 anti-GLUT5 antibody WB image

Western blot: 1) U87, 2) 293T, 3) HT1080 and 4) SW620 cell lysates stained with ARG11029 anti-GLUT5 antibody.