

ARG10833 anti-BPL / BioID2 antibody [SS 3A5-E2]

Package: 100 µg
Store at: -20°C

Summary

Product Description	Mouse Monoclonal antibody [SS 3A5-E2] recognizes BPL / BioID2
Tested Reactivity	Bacteria
Tested Application	ICC/IF, WB
Host	Mouse
Clonality	Monoclonal
Clone	SS 3A5-E2
Isotype	IgG1, kappa
Target Name	BPL / BioID2
Species	Bacteria
Immunogen	GST fused to A. aeolicus BPL R40G (BioID2).
Conjugation	Un-conjugated
Alternate Names	BPL; BioID2; BioID

Application Instructions

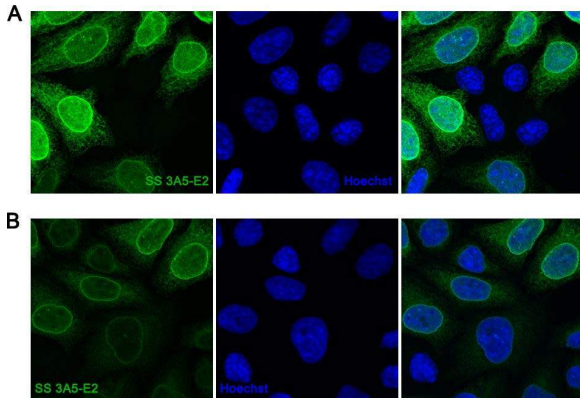
Application table	Application	Dilution
	ICC/IF	Assay-dependent
	WB	Assay-dependent
Application Note	* The dilutions indicate recommended starting dilutions and the optimal dilutions or concentrations should be determined by the scientist.	
Positive Control	Cells overexpressing A. aeolicus BPL R40G (BioID2) construct.	

Properties

Form	Liquid
Purification	Affinity purification with immunogen.
Buffer	PBS and 0.02% Sodium azide.
Storage instruction	For continuous use, store undiluted antibody at 2-8°C for up to a week. For long-term storage, aliquot and store at -20°C or below. Storage in frost free freezers is not recommended. Avoid repeated freeze/thaw cycles. Suggest spin the vial prior to opening. The antibody solution should be gently mixed before use.
Note	For laboratory research only, not for drug, diagnostic or other use.

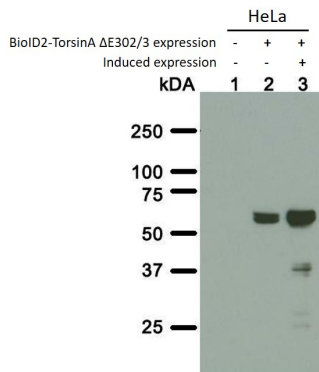
Bioinformation

Images



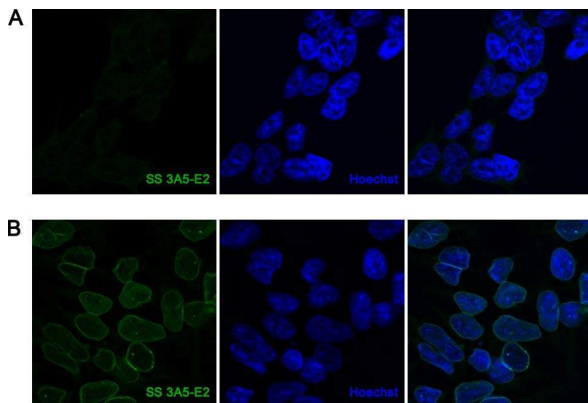
ARG10833 anti-BPL/BioID2 antibody [SS 3A5-E2] ICC/IF image

Immunofluorescence: HeLa polyclonal cell line expressing BioID2 tagged to TorsinA $\Delta E302/3$ and stained with ARG10833 anti-BPL/BioID2 antibody [SS 3A5-E2]. Cells were fixed in (A) cold methanol or (B) 4% PFA. Left: Primary antibodies (green). Middle: Hoechst (blue). Right: Merge.



ARG10833 anti-BPL/BioID2 antibody [SS 3A5-E2] WB image

Western blot: Total cell lysate of parental HeLa cell line (Lane 1), HeLa polyclonal cell line stably expressing BioID2-TorsinA $\Delta E302/3$ without (Lane 2) or with induced expression (Lane 3). The blots were stained with ARG10833 anti-BPL/BioID2 antibody [SS 3A5-E2].



ARG10833 anti-BPL/BioID2 antibody [SS 3A5-E2] ICC/IF image

Immunofluorescence: (A) Parental HEK293T or (B) monoclonal HEK293T cell line with BioID2 "knocked-in" into at least one LMNA gene alleles (resulting in BioID2 LaminA/C fusion protein) were stained with ARG10833 anti-BPL/BioID2 antibody [SS 3A5-E2]. Left: Primary antibodies (green). Middle: Hoechst (blue). Right: Merge.