

## ARG10825 anti-MAG antibody

Package: 50 µg  
Store at: -20°C

### Summary

Product Description	Rabbit Polyclonal antibody recognizes MAG
Tested Reactivity	Hu, Ms, Rat
Predict Reactivity	Dog, Mk, Rb
Tested Application	IHC-P, WB
Host	Rabbit
Clonality	Polyclonal
Isotype	IgG
Target Name	MAG
Species	Human
Immunogen	aa. 114-132 (KYYFRGDLGGYNQYTFSEH) (100% homologous in Human, Mouse and Rat).
Conjugation	Un-conjugated
Alternate Names	GMA; Myelin-associated glycoprotein; SIGLEC4A; S-MAG; Siglec-4a; SIGLEC-4A

### Application Instructions

Application table	Application	Dilution
	IHC-P	1 - 5 µg/ml
	WB	0.5 - 1 µg/ml

**Application Note** \* The dilutions indicate recommended starting dilutions and the optimal dilutions or concentrations should be determined by the scientist.

### Properties

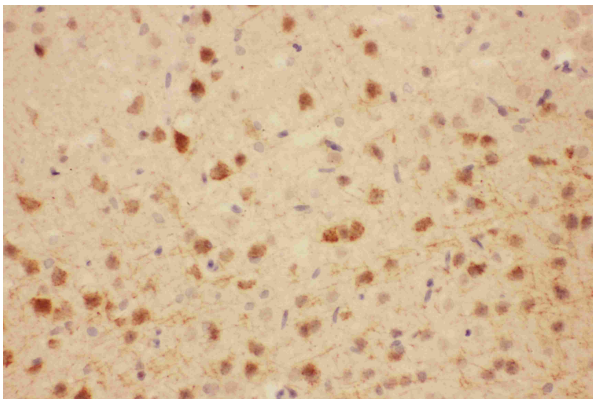
Form	Liquid
Purification	Affinity purification with immunogen.
Buffer	PBS, 0.025% Sodium azide and 2.5% BSA.
Preservative	0.025% Sodium azide
Stabilizer	2.5% BSA
Concentration	0.5 mg/ml
Storage instruction	For continuous use, store undiluted antibody at 2-8°C for up to a week. For long-term storage, aliquot and store at -20°C or below. Storage in frost free freezers is not recommended. Avoid repeated freeze/thaw cycles. Suggest spin the vial prior to opening. The antibody solution should be gently mixed before use.

Note For laboratory research only, not for drug, diagnostic or other use.

## Bioinformation

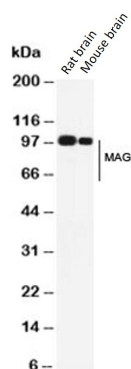
Gene Symbol	MAG
Gene Full Name	myelin associated glycoprotein
Background	The protein encoded by this gene is a type I membrane protein and member of the immunoglobulin superfamily. It is thought to be involved in the process of myelination. It is a lectin that binds to sialylated glycoconjugates and mediates certain myelin-neuron cell-cell interactions. Three alternatively spliced transcripts encoding different isoforms have been described for this gene. [provided by RefSeq, Nov 2010]
Function	Adhesion molecule in postnatal neural development that mediates sialic-acid dependent cell-cell interactions between neuronal and myelinating cells. Preferentially binds to alpha-2,3-linked sialic acid (By similarity). [UniProt]
Calculated Mw	60-100 kDa (glycosylated)
PTM	N-glycosylated. Phosphorylated on tyrosine residues.

## Images



ARG10825 anti-MAG antibody IHC-P image

Immunohistochemistry: Paraffin-embedded Rat brain stained with ARG10825 anti-MAG antibody.



ARG10825 anti-MAG antibody WB image

Western blot: Rat brain and Mouse brain lysates stained with ARG10825 anti-MAG antibody.