

## ARG10823 anti-MTF6 antibody

Package: 50 µl  
Store at: -20°C

### Summary

Product Description	Rabbit Polyclonal antibody recognizes MTF6
Tested Reactivity	Hu
Predict Reactivity	Ms, Rat, Cow, Dog, Goat, Gpig, Hrs, Rb, Sheep, Zfsh
Tested Application	IHC-P, WB
Host	Rabbit
Clonality	Polyclonal
Isotype	IgG
Target Name	MTF6
Species	Human
Immunogen	Synthetic peptide around the N-terminus of Human MYF6. (PGLQPPHCPGQCLIWACKTCKRKSAPTRRKAATLRERRRLKINEAFEA)
Conjugation	Un-conjugated
Alternate Names	Muscle-specific regulatory factor 4; Myf-6; bHLHc4; myf-6; Class C basic helix-loop-helix protein 4; MRF4; Myogenic factor 6; CNM3

### Application Instructions

Application table	Application	Dilution
	IHC-P	4 - 8 µg/ml
	WB	0.2 - 1 µg/ml
Application Note	* The dilutions indicate recommended starting dilutions and the optimal dilutions or concentrations should be determined by the scientist.	
Positive Control	Fetal heart.	

### Properties

Form	Liquid
Purification	Affinity purified.
Buffer	PBS, 0.09% (w/v) Sodium azide and 2% Sucrose.
Preservative	0.09% (w/v) Sodium azide
Stabilizer	2% Sucrose
Concentration	Batch dependent: 0.5 - 1 mg/ml
Storage instruction	For continuous use, store undiluted antibody at 2-8°C for up to a week. For long-term storage, aliquot and store at -20°C or below. Storage in frost free freezers is not recommended. Avoid repeated freeze/thaw cycles. Suggest spin the vial prior to opening. The antibody solution should be gently mixed

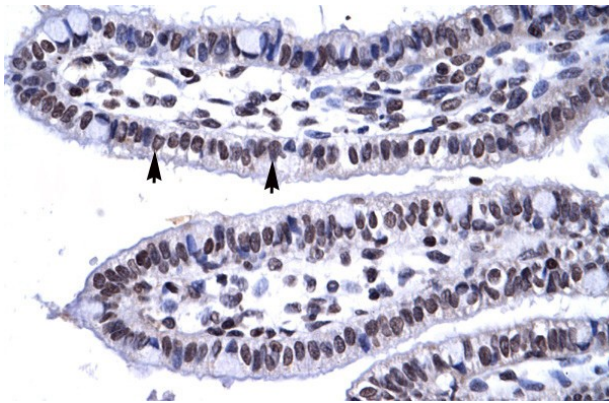
before use.

Note For laboratory research only, not for drug, diagnostic or other use.

## Bioinformation

Gene Symbol	MYF6
Gene Full Name	myogenic factor 6 (herculin)
Background	The protein encoded by this gene is a probable basic helix-loop-helix (bHLH) DNA binding protein involved in muscle differentiation. The encoded protein likely acts as a heterodimer with another bHLH protein. Defects in this gene are a cause of autosomal dominant centronuclear myopathy (ADCNM). [provided by RefSeq, May 2010]
Function	Involved in muscle differentiation (myogenic factor). Induces fibroblasts to differentiate into myoblasts. Probable sequence specific DNA-binding protein. [UniProt]
Calculated Mw	27 kDa

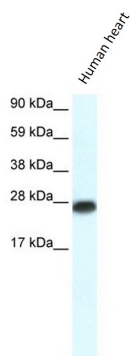
## Images



ARG10823 anti-MTF6 antibody IHC-P image

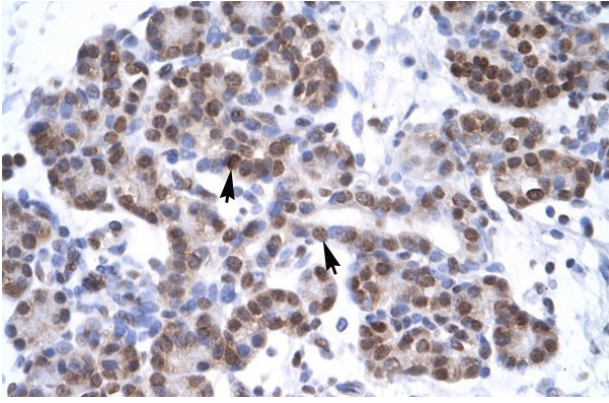
Immunohistochemistry: Paraffin-embedded Human intestine stained with ARG10823 anti-MTF6 antibody.

Magnification: 400X



ARG10823 anti-MTF6 antibody WB image

Western blot: Human heart lysate stained with ARG10823 anti-MTF6 antibody.



ARG10823 anti-MTF6 antibody IHC-P image

Immunohistochemistry: Paraffin-embedded Human pancreas stained with ARG10823 anti-MTF6 antibody.

Magnification: 400X